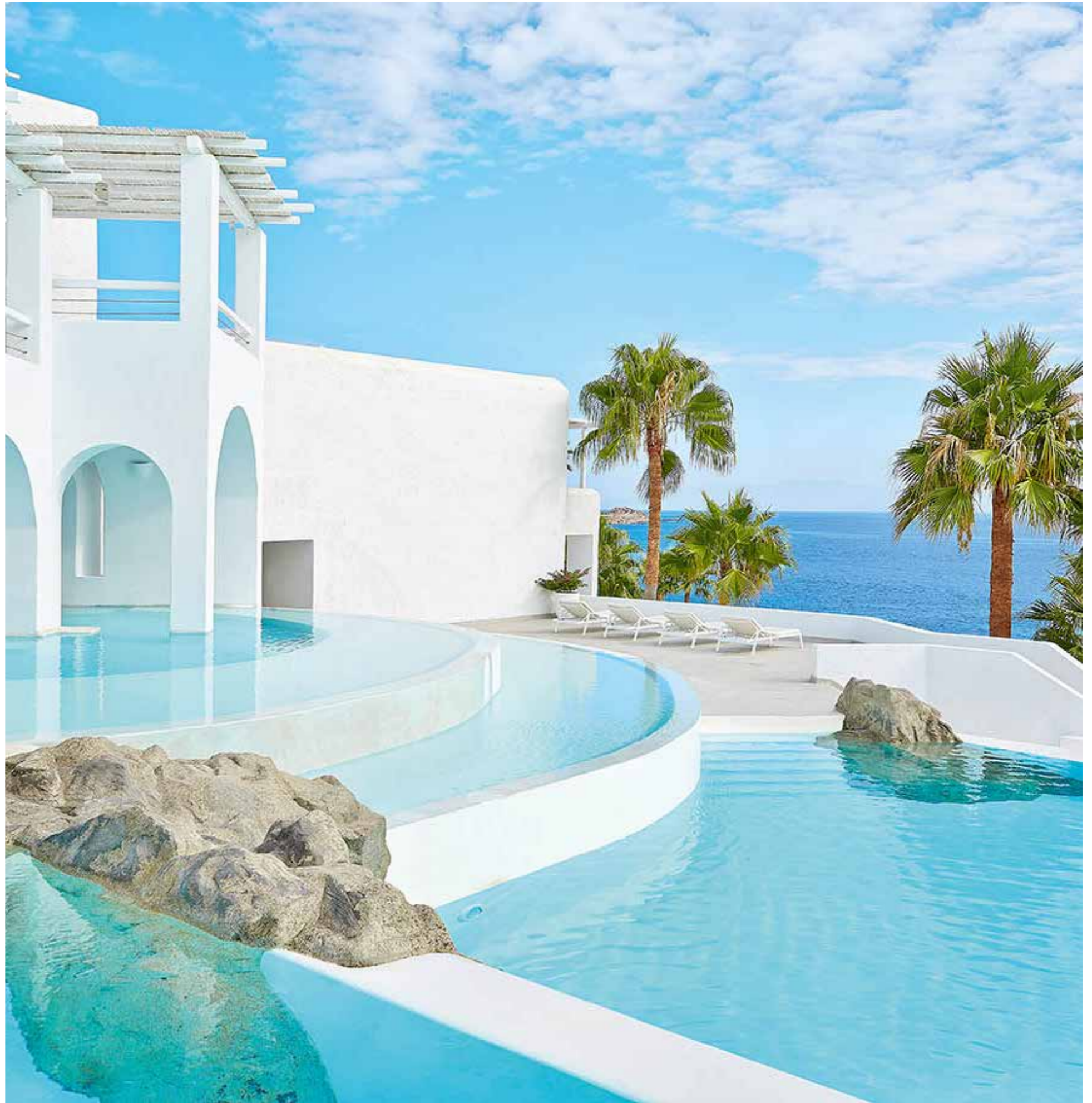




GRECOTEL MYKONOS BLU

EXCLUSIVE RESORT, MYKONOS



Mykonos Blu is about views, light and space. Set on a low bluff overlooking the world-famous cosmopolitan beach of Psarou, its island bungalows and private villas are thoughtfully designed to reflect the cubist lines of the Cyclades. Prepare yourself to be hypnotised by the sea and sky on the edge of an Aegean fantasy.



AT A GLANCE



Ideal for All ages

Location Overlooking the Psarou beach

Town of Mykonos: 4,5 km • **Airport:** 3,2 km • **Port:** 5 km

Accommodation Total Rooms 103 • Total Beds 222 • Bungalows 70 • Apartments 6 • Suites 17 • Villas 8

Beach & Pools • Steps leading down to Psarou – a Blue Flag awarded sandy beach • 1 Seawater infinity pool
• 3 sharing pools for designated rooms • 19 private pools

Features • Elixir Wellness Center with sauna & fitness room • Grecoland Corner • Conference & Meeting facilities

Activities • Sauna • Fitness Room • Spa • Yoga Classes • Fishing caiques & private water taxis to island beaches
• Jeep safari • Jogging • Fishing • Horse riding (nearby) • Watersports (nearby) • Scuba Diving (nearby)

Awards • Conde Nast Traveler 2018 READERS' CHOICE AWARDS • ROYAL BLU MANSION VILLA in the category
"Greece's Leading Luxury Hotel Villa 2018" • TUV Austria Hellas - ISO 10002: 2014 - Quality Management Guidelines for
Customer Satisfaction and Complaint Management • Blue flag • EXCELLENCE AWARD 2018 by Tripadvisor

RESTAURANTS & BARS

Breakfast

Aegean Poets

Mediterranean Cuisine

Buffet laden with an array of fresh, seasonal, locally sourced and organic products • Menu of made-to-order egg dishes.

L' Archipel

Brasserie

Continental Breakfast on the poolside.

Lunch

Aegean Poets

Mediterranean Cuisine

A la carte Greek and seafood specialties • Kids' menus

L' Archipel

Brasserie

Contemporary seafood and outstanding Greek island flavors • Kids' menus

Dinner

Aegean Poets

Mediterranean Cuisine

A la carte Greek and seafood specialties • Theme buffets occasionally • Kids' menus

Snacks

Service on the beach

Refreshing drinks and a light snack menu.

Bars

Delos Lounges

Rooftop Bar

With breathtaking views

Room Service

24 hours In Room Dining

Special Dining

A personalised dining experience, in room/villa or on the beach.

KIDS

Grecobaby, 0-3 yrs.

Pre-arrival order of baby equipment

- Extra charge Baby-sitting
- Infant food (to order in restaurants)

Grecoland Corner, 4-12 yrs.

6 days per week during July - August

- Children under 4 yrs. must be supervised at all times by a parent or guardian.

Kids Dining, 3-12 yrs.

Kids' menus are available at main restaurant and at the à la carte restaurants, extra charge.

See description on p. @@@

SPA & WELLNESS

Elixir Wellness Centre

Spa Facilities

- Private Massage Rooms
- Changing Rooms
- Sauna
- Body & Soul Elixirs
- Luxury Facials & Body Treatments
- Signature Treatments
- Manicure & Pedicure

Gym

Fitness room with Technogym cardio fitness equipment including: 1x Cybex Dual axis pulldown, 1x Cybex axis chest press, 1x Cybex hip abduction/adduction, 1x Cybex leg extension, 1x Cybex seated leg curl, 2x Technogym treadmill, 2x Technogym elliptical cross trainer, 2x Technogym exercise bike, 4x Cybex bent leg abdominal board, 1x Cybex Smith Press -Fixed Bar

RECREATION

Gymnastics

Yoga Classes (extra charge), Jogging

Outside The Hotel

Extra charge: Watersports

- Scuba Diving
- Fishing caiques & private water taxis to island beaches
- Jeep safari
- Jogging
- Fishing
- Horse riding

Evening Entertainment

Live Music Performances (once a week)

ENVIRONMENTAL POLICY

- Energy and water saving programmes
- Eco friendly cleaning agents.

SERVICES

WiFi Free, in all hotel areas and guest rooms.

Guest Portal Useful information & services about their stay, available online for all guests.

24h WhatsApp Concierge

Designated staff members are at call on WhatsApp, to assist guests on everything they may desire.

Multilingual personnel

English, German, Russian, French, Italian, Greek



Medical Services

24hr Medical cover, Doctor on call -extra charges may apply depending on guests' travel insurance

- Pharmacy at 3 km
- Hospital at 3 km

Transport

Car and motorbike rental

- Bus stop directly outside the hotel
- Taxi Service on request to Mykonos town (3,5km)
- to Airport (4km)
- Taxi & Limo Service available on request.

Money

All major Credit Cards are accepted

- Money Exchange at hotel's Reception
- Nearest ATM at 1,5 km
- Nearest Bank at 3 km

Voltage

Current 220V.

Mobility Impaired Guests

Due to hotel's layout some departments and rooms are not accessible for the mobility impaired guests.

Animals Are not permitted in the hotel.

Official Hotel Categorization Five star Resort

Contact details

Psarou, Mykonos, GR 84600

TEL.: (+30) +30 22890 27900

E-mail: reservations.mb@grecotel.com





1. Entrance
2. Swimming pool
3. L' Archipel Pool Brasserie
4. Kids Corner
5. Aegean Poets Restaurant
6. Sky Terrace
7. Reception
8. Beach
9. Pool/Terrace
10. Bungalows
11. Elixir Fitness Gallery
12. Open Plan Suites Private Pool
13. Mykonos Blu Villas
14. Deep Blu Villa Heated Pool & Outdoor Jacuzzi
15. Endless Blu Villa On The Waterfront Private Pool
16. Cobalt Blu Villa On The Waterfront Private Pool
17. Island Blu Villa Private Pool
18. Royal Blu Mansion

ACCOMMODATION CHART

ROOM TYPES	LOCATION	SIZE	SLEEPS	VIEW
Island Garden Room	Garden Area	up to 29 m ²	2+1	Hotel or Garden
Island Bungalow, Side Sea View	Garden Area	up to 29 m ²	2+1	Side Sea
Island Bungalow, Deluxe	Prime Location	up to 29 m ²	2+1	Sea
Waterfront Bungalow	Prime Waterfront	up to 29 m ²	2+1	Sea
Island Bungalow with Private Pool	Garden Area	up to 35 m ²	2+1	Garden
Luxury Bungalow with outdoor Jacuzzi	Garden Area	up to 29 m ²	2+1	Garden
Honeymoon Bungalow/Junior Bungalow Suite	Waterfront Garden Area	35-40 m ²	2+1	Sea
FAMOUS CLASS ACCOMMODATION				
Mykonos Blu Apartment	Beachfront	52-70 m ²	2+2	Sea, Sea Side or Garden
Mykonos Blu Apartment with sharing pool	Prime Location	52-70 m ²	2+2	Hotel or Garden
Exclusive Bungalow Suite	Prime Location	up to 52m ²	2+2	Panoramic Sea
Exclusive Bungalow Suite with outdoor Jacuzzi	Prime Location	up to 55m ²	2+2	Panoramic Sea
Open Plan Suite with Private Pool	Prime Waterfront	up to 45m ²	2+1	Panoramic Sea
Luna Blu Suite with Private Indoor Pool	Prime Waterfront	125m ²	2+1	Direct Sea
S-Cape Suite	Prime Waterfront	80m ²	2+2	Direct Sea
Euphoria Suite	Prime Waterfront	110m ²	4+2	Direct Sea
Grand Blu Suite with private pool	Prime Waterfront	70m ²	2+2	Direct Sea
Mykonos Blu Junior Villa with private pool	Prime Waterfront	50m ²	2+1	Panoramic Sea
Cobalt Blu Villa with Private Pool	Prime Waterfront	60-80m ²	2+3	Panoramic Sea
Island Blu Villa with Private Pool	Prime Location on the Ground Floor	100m ²	4+2	Direct Sea
Endless Blu on the Waterfront Villa with Private Pool	Prime Waterfront	82m ²	4+2	Panoramic sea
Deep Blu Villa with Private Pool	Prime Waterfront	125m ²	4+2	Lofty Panoramic Sea
Royal Blu Mansion (Mykonos Royal Villa) with Private Pool	Prime Waterfront	300m ²	8+2	Lofty Panoramic Sea

Famous Class Services. See description on p. @@@

ACCOMMODATION LAYOUTS & PHOTOS ARE SAMPLES AND MAY VARY DEPENDING ON THE POSITION WITHIN THE HOTEL. MEASUREMENTS ARE APPROXIMATE TO THE NEAREST m²

View more details & photos about facilities, services & room details online at mykonosblu.com

All room types include:

- Balcony/Terrace
- Bath/shower, WC
- Hairdryer
- Shaver Outlet
- Magnifying Mirror
- Telephone
- Satellite TV
- Air-conditioning/heating
- Fridge
- Safe deposit box
- Minibar with extra charge

GRECOTEL
MYKONOS BLU
EXCLUSIVE RESORT



ISLAND GARDEN ROOM HOTEL OR GARDEN VIEW

Cycladic-style bungalows clustered in small groups throughout the gardens. Cool and stylish with romantic touches.

Location: Garden Area

View: Hotel or Garden View

Size: Indoor up to 29 sq.m., outdoor: 5 sq.m.

Layout: Open plan

Sleeps: 2 adults + 1 child

Beds: Double king size bed & extra sofa bed

Bath: En-suite bathroom with one washbasin, bathtub. In most guestrooms features polished stone shower in a carved recess with inset phototherapy.



ISLAND BUNGALOW SIDE SEA VIEW

Cycladic-style bungalows clustered in small groups throughout the gardens. Cool and stylish with romantic touches.

Location: Garden Area

View: Side Sea

Size: Indoor up to 29 sq.m., outdoor: 10 sq.m.

Layout: Open plan

Sleeps: 2 adults + 1 child

Beds: Double king size bed & extra sofa bed

Bath: En-suite bathroom with one washbasin, bathtub. In most guestrooms features polished stone shower in a carved recess with inset phototherapy.



ISLAND BUNGALOW DELUXE SEA VIEW

A selection of bright and breezy guestrooms designed as a cozy retreat from the jet set island's whirring life.

Location: Prime Location

View: Amazing Sea View

Size: Indoor up to 29 sq.m., outdoor: 6 sq.m.

Layout: Open plan

Sleeps: 2 adults + 1 child

Beds: Double king size bed & extra sofa bed

Bath: Walled-off bathroom with one washbasin & a classic bathtub. Selected bungalows feature spacious bathroom with a recessed stone shower with inset phototherapy.



WATERFRONT BUNGALOW DIRECT SEA VIEW

Romantic havens with stylish details that highlight the luxury of these premium accommodations.

Location: Prime Waterfront

View: Direct Sea View

Size: Indoor up to 29 sq.m., outdoor: 7 sq.m.

Layout: Open plan

Sleeps: 2 adults + 1 child

Beds: Double king size bed & extra sofa bed

Bath: Polished stone shower in carved recess with inset phototherapy in selected guestrooms, one washbasin





LUXURY BUNGALOW WITH OUTDOOR JACUZZI GARDEN VIEW

Lavish Luxury Bungalows scattered around the hotel with outdoor Jacuzzi are an oasis of comfort and luxury.

Location: Garden Area, Scattered around the hotel.

View: Garden View

Size: Indoor up to 29 sq.m., outdoor up to 60 sq.m.

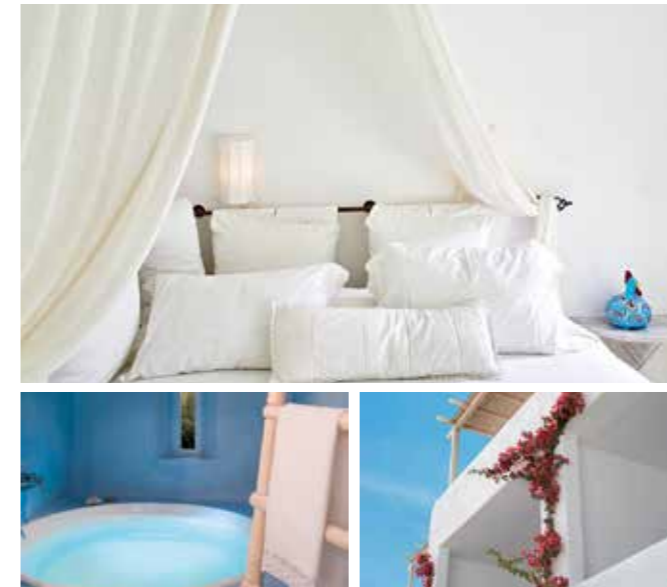
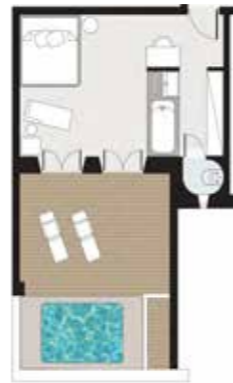
Layout: Open plan

Sleeps: 2 adults + 1 child

Beds: Double king size bed & extra sofa bed

Bath: Spacious bathroom with polished stone shower in a carved recess with inset phototherapy

Specials: Private terrace with a heated. Outdoor Jacuzzi



Famous Class

MYKONOS BLU APARTMENT SEA, SEA SIDE OR GARDEN VIEW

Specially designed for families, the deluxe Mykonos Blu Apartment cleverly integrates parents' desire for togetherness with their need for privacy.

Location: Exceptional waterfront location

View: Sea, Sea Side or Garden View

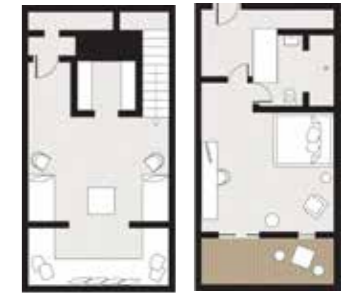
Size: Indoor: 52-70 sq.m., outdoor: 10 sq.m.

Layout: Split level

Sleeps: 2 adults + 2 children

Beds: Double king size bed & 2 extra sofa beds

Bath: Polished stone shower alcove with phototherapy effects. Extravagant second private bathroom with bathtub



ISLAND BUNGALOW WITH PRIVATE POOL GARDEN VIEW

Spacious accommodation, a haven to relax, with sleeping, dining, and living areas within an open-plan design, furnished with many eclectic details.

Location: Garden area

View: Limited Sea View

Size: Indoor up to 35 sq.m., outdoor up to 60 sq.m.

Layout: Open plan

Sleeps: 2 adults + 1 child

Beds: Double king size bed & extra sofa bed

Bath: Spacious bathroom with double wash basins, bathtub and separate polished stone shower in a carved recess with phototherapy effects.

Specials: Private waterfront garden



Famous Class

MYKONOS BLU APARTMENT WITH SHARING POOL HOTEL OR GARDEN VIEW

The ultimate in family accommodation for discerning travelers to indulge the holiday mood on the shaded terrace by the sharing pool.

Location: Prime location

View: Hotel or Garden View

Size: Indoor: 52-70 sq.m., outdoor: 10 sq.m.

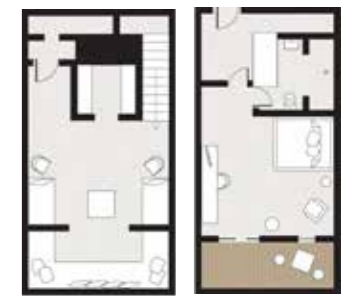
Layout: Split level

Sleeps: 2 adults + 2 children

Beds: Double king size bed & 2 extra sofa beds

Bath: Polished stone shower alcove with phototherapy effects. Extravagant second private bathroom with bathtub

Specials: Sharing Pool 15 sq.m. Shaded terrace.



HONEYMOON BUNGALOW/JUNIOR BUNGALOW SUITE SEA VIEW

A deluxe category of Mykonos Blu accommodation designed with newlyweds in mind, with a covered terrace offering amazing sea views.

Location: Waterfront Garden Area

View: Sea View

Size: Indoor: 35-40 sq.m., outdoor up to 40 sq.m.

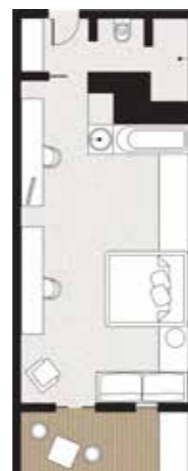
Layout: Open-plan

Sleeps: 2 adults + 1 child

Beds: Double king size bed & extra sofa bed

Bath: Spacious bathroom and grooming area with built in bathtub & separate shower (selected suites) or Polished stone bathroom with a round bathtub for two (selected suites), Marble double wash basins (selected suites)

Specials: Private seafront terrace. Traditional Cycladic architecture with polished stone paired with contemporary design



Famous Class

EXCLUSIVE BUNGALOW SUITE PANORAMIC SEA VIEW

Revel in the sheer luxury of bespoke accommodation designed to pamper the body and soothe the senses.

Location: Prime Location **View:** Panoramic Sea View

Size: Indoor up to 52 sq.m., outdoor: 20 sq.m.

Layout: Open-plan **Sleeps:** 2 adults + 2 children

Beds: King size bed facing the sea with voile canopy (in selected rooms) & 2 extra sofa beds

Bath: Deep soaking polished stone bathtub. Separate polished stone shower in a carved recess with inset phototherapy

Specials: Walk-in wardrobes. Exposed rock wall (in selected guest rooms)





Famous Class

EXCLUSIVE BUNGALOW SUITE WITH OUTDOOR JACUZZI PANORAMIC SEA VIEW

These large updated guestrooms in a beautiful family friendly setting are the epitome of gracious bungalow comfort, spilling out to a large shaded terrace with a private heated Jacuzzi.

Location: Prime Location
View: Panoramic Sea View
Size: Indoor up to 55 sq.m., outdoor: 20 sq.m.

Layout: 2 separate sleeping areas

Sleeps: 2 adults + 2 children

Beds: Double king size bed & 2 extra sofa beds

Bath: Polished concrete shower featuring phototherapy

Specials: Private shaded terrace with a heated. Outdoor Jacuzzi. Prime waterfront location overlooking Psarou Beach.



Famous Class

OPEN PLAN SUITE WITH PRIVATE POOL PANORAMIC SEA VIEW

Newly updated spacious bungalows live up to their name of being a true heaven for families. Ideally located in a beautiful kid's friendly setting Paradiso Family Bungalows overlook the lavish landscape.

Location: Prime Waterfront

View: Panoramic Sea

Size: Indoor up to 45 sq.m., outdoor up to 50 sq.m.

Layout: Open-plan

Sleeps: 2 adults + 1 child

Beds: Double king size bed & extra sofa bed

Bath: One wash basin, bathtub and shower

Pool: Private infinity-edge heated swimming pool 13-18m²

Specials: Private shaded terrace



Famous Class

GRAND BLU SUITE WITH PRIVATE POOL DIRECT SEA VIEW

The remarkable setting inspires the unique decor. The Grand Blu Suite with a large private pool overlooking the famous Psarou Beach is the ultimate accommodation in Mykonos Blu.

Location: Prime Waterfront

View: Direct Sea View

Size: Indoor: 70 sq.m., outdoor: 70 sq.m.

Layout: 2 separate sleeping areas

Sleeps: 2 adults + 2 children

Beds: Double king size bed & 2 extra sofa beds

Bath: 1 washbasin, 1 bathtub and separate WC

Pool: Private heated swimming pool 25m²

Specials: Prime waterfront location overlooking Psarou Beach. Private shaded terrace with dining furniture and sun loungers



Famous Class

S-CAPE SUITE DIRECT SEA VIEW

The waterfront S-Cape Suite is an intimate, private haven offering generous living space with separate sleeping quarters.

Location: Prime Waterfront Location

View: Direct Sea View

Size: Indoor: 80 sq.m., outdoor up to 35 sq.m.

Layout: 2 separate sleeping areas

Sleeps: 2 adults + 2 children

Beds: Double king size bed & 2 extra sofa beds

Bath: Built-in bath made of polished concrete. Separate WC with wash basin

Specials: Walk in wardrobes. Prime waterfront location overlooking Psarou Beach



Famous Class

LUNA BLU SUITE WITH PRIVATE INDOOR POOL DIRECT SEA VIEW

Luna Blu Suite with private indoor pool is the most extravagant romantic suite on Mykonos Island.

Location: Prime Waterfront

View: Direct Sea View

Size: Indoor: 125 sq.m., outdoor: 15 sq.m.

Layout: Open-plan. Folding floor-to-ceiling glass doors can separate the bedroom from the indoor pool.

Sleeps: 2 adults + 1 child

Beds: King size bed facing the sea

Bath: 2 wash basins and separate polished stone shower alcove with phototherapy effects.

Pool: Private indoor heated pool 20m² with Jacuzzi

Specials: Private flower and lawn garden



Famous Class

EUPHORIA SUITE DIRECT SEA VIEW

This extravagant all-white grand suite boasts a privileged location within the resort, generous space with two master bedroom suites and an oversized open plan lounge area that can serve as an auxiliary bedroom.

Location: Prime Waterfront Location

View: Direct Sea View

Size: Indoor: 110 sq.m., outdoor: 35 sq.m.

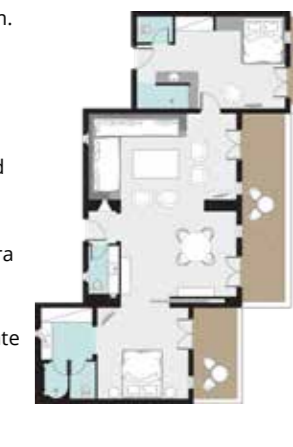
Layout: 2 separate sleeping areas and an open-plan lounge area

Sleeps: 4 adults + 2 children

Beds: 2 Double king size beds & 2 extra sofa beds

Bath: 2 Bathrooms with walk-in wardrobe, built-in bathtub and separate polished stone shower, separate WC

Specials: Prime waterfront location overlooking Psarou Beach. 3 spacious private balconies





Famous Class

MYKONOS BLU JUNIOR VILLA WITH PRIVATE POOL PANORAMIC SEA VIEW

Set on the waterfront, each with a private swimming pool and views of the vast blue beyond.

Location: Prime Waterfront

View: Panoramic Sea View

Size: Indoor up to 50 sq.m., outdoor up to 100 sq.m.

Layout: Open-plan, with distinct sleeping and living areas

Sleeps: 2 adults + 1 child

Beds: King size bed with voile canopy & extra sofa bed

Bath: 2 wash basins and Phototherapy rain shower

Pool: Private infinity swimming pool 25m²

Specials: Shaded terrace with outdoor dining area. Flower and lawn garden. Amazing direct views from the bed to the sea. Exposed rock cave



Famous Class

ISLAND BLU VILLA WITH PRIVATE POOL DIRECT SEA VIEW

A unique architectural idea for those wishing discrete luxury and comfort.

Location: Prime Location on the Ground Floor

View: Direct Sea View

Size: Indoor: 100 sq.m., outdoor: 65 sq.m.

Layout: Two-Villas area, separated by a pool terrace

Sleeps: 4 adults + 2 children

Beds: 1 Double King size bed facing the sea with voile canopy, 1 Double king size bed & 2 extra sofa beds

Bath: En-suite bathroom with built-in bathtub made of polished concrete. Double marble wash basins and rain shower with phototherapy effects.

Pool: Private swimming pool 30m²

Specials: Pool terrace with private pool. Exposed rock cave and rock wall



Famous Class

COBALT BLU VILLA WITH PRIVATE POOL PANORAMIC SEA VIEW

The two Cobalt Blu Villas on the Waterfront are cleverly designed in split-level layout and offer panoramic views of the Aegean Sea. Perfect for a family or a couple who want the maximum privacy.

Location: Prime Waterfront

View: Panoramic Sea View

Size: Indoor: 60-80 sq.m., outdoor: 150 sq.m.

Layout: Two-Villa Complex, Split-level

Sleeps: 2 adults + 3 children

Beds: Double king size bed & 2 extra sofa beds

Bath: 1 sunken polished stone bathtub and shower with phototherapy effects. Double marble basins and separate WC

Pool: Private infinity heated swimming pool 25m²

Specials: Shaded terrace and extended lawn garden



Famous Class

ENDLESS BLU ON THE WATERFRONT VILLA WITH PRIVATE POOL PANORAMIC SEA VIEW

This spacious and comfortable villa consists of two sea-view master bedroom suites and a stylish living room. The landscaped extended waterfront garden with swimming pool gives a first impression of the unique scenery.

Location: Prime Waterfront **View:** Panoramic Sea View

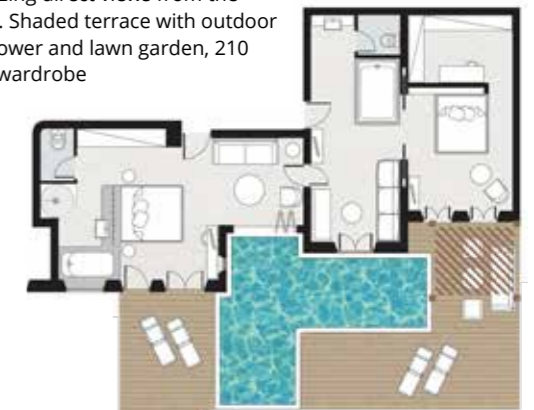
Size: Indoor: 82 sq.m., outdoor: 210 sq.m. **Layout:** Two villa areas, 2 Master Bedrooms **Sleeps:** 4 adults + 2 children

Beds: 2 Double king size beds with voile canopy & 2 extra sofa beds

Bath: Walk in wardrobe and living room with large built in bathtub with phototherapy effects, double marble washbasins and separate WC. Sea view bathroom with a built-in bath made of polished concrete and a blue grotto: a separate polished stone shower alcove with phototherapy effects.

Pool: Private heated swimming pool 32m²

Specials: Amazing direct views from the bed to the sea. Shaded terrace with outdoor dining area. Flower and lawn garden, 210 sq.m. Walk-in wardrobe





Famous Class

DEEP BLU VILLA WITH PRIVATE POOL LOFTY PANORAMIC SEA VIEW

The ultimate in family accommodation for discerning travelers, the Villa Deep Blu cleverly integrates parents' desire for togetherness with their need for privacy.

Location: Prime Waterfront

View: Lofty Panoramic Sea View

Size: Indoor: 125 sq.m., outdoor 80 sq.m.

Layout: Two Level Residence

Sleeps: 4 adults + 2 children

Beds: 2 Double king size beds & 2 extra single beds

Bath: A built-in bath made of polished concrete and a blue grotto: a separate polished stone shower alcove with phototherapy effects. Second spacious bathroom

Pool: Private shaded heated swimming pool 30m²

Specials: Private wardrobe area with large cupboard space. Amazing direct views from the bed to the sea. Private entrance and elevator. 125 sq.m. indoor living area. Spacious living room with large glass folding panels leading directly to the private shaded pool. Outdoor jacuzzi. Lofty views from private terrace



Famous Class

ROYAL BLU MANSION (MYKONOS ROYAL VILLA) WITH PRIVATE POOL LOFTY PANORAMIC SEA VIEW

The ultimate in family accommodation for discerning travelers, the Villa Deep Blu cleverly integrates parents' desire for togetherness with their need for privacy.

Location: Prime Waterfront

View: Lofty Panoramic Sea View

Size: Indoor: 300 sq.m., outdoor 200 sq.m.

Layout: Two Level Residence, 4 Master Bedrooms

Sleeps: 8 adults + 2 children

Beds: Master Bedroom Suite with direct views from bed to sea, 3 Double king size beds & 2 extra single beds

Bath: En-suite bathroom with bath, separate shower, WC and double vanity unit. Two further Royal Blu Master Bedrooms offers a private bathroom with hand carved bathtub.

Pool: Private shaded heated swimming pool 30m²

Specials: Private entrance and elevator. Extravagant reception area and lounges. Kitchen and butler's amenities. Private living room with shaded pool. 3 spacious fully furnished terraces with panoramic sea views & outdoor Jacuzzis. Private wardrobe area with large cupboard space. Staff room or kids room. Private parking

